



**JIFUNZE INTERNATIONAL
ANNUAL REPORT
2020 - 2021**

WWW.JIFUNZEINTERNATIONAL.COM

JIFUNZE INTERNATIONAL HISTORY

In 2017 our founder, Victoria Porter, visited Kenya for the first time. Believing that she would leave the country behind after six weeks was a naive thought, for it was during this time that she met people who would change her life forever. During a session with the women in the HIV support group in Kitengela, they shared their fear of telling their children about their health status because of the stigma that they would incur.

Victoria and a group of other volunteers offered a short lesson in HIV, what it is and how to deal with it. This created pathways for some to come forward and speak to their children. But for others in the room it, created a new angle of fear and realisation that their own domestic and sexual violence stories may have led to them contracting the virus.

Reaching out to NGO Ujamaa Africa, Victoria was able to go and view school lessons targeted at children between class 4 and 8. The program included puberty and sexual health education, as well as self-defence classes. Knowing that this was what was needed in the Kitengela community, a contract was drawn and Victoria set to fundraising amongst her friends. Because of this fundraising in May 2018, the children at Noonkirpor Primary School were the first in the area to receive this education.

Since then, over 1700 students have been educated in puberty and sexual health lessons, and 44 children have been entered into the Ujamaa Africa Sexual Assault Survivors Anon program.



In 2020, Victoria formed Jifunze International and the company was registered by the Australian Charities and Not For Profit Commission later that year.

In the time that has passed, so much has been achieved and we are forever grateful to the many supporters and donors who have gotten behind Jifunze International. Their ongoing support has provided resources and inspiration along the way and in acknowledgement of their commitment, it is Jifunze International's promise to ensure that 100% of all donations will be applied to the projects we carry out.



2017

ASANTE SANA THANK YOU

Girish Ramachandraiah
Allyce Rawnsley (Yellow Brick Road Kirwan)

Alex Davis

Rachel McCarthy

Robyn and Ian Jones

Mikaela Murray

Andrew Lee

Richard Hynes

Giselle Brown

Emma McGleenan

Marlene Orr

Madeline Dykes

Catherine Mackin

Melissa Pearce

Roisin Porter

Elizabeth Graczyk

Christine Ward

Annabelle Rouge

Liz Iorfino

Emma Smyth

Phillip Phorn

Amellah Aliping and Adrian Field

Sally Lay

Roberta Porter

Kristin Spraakman

Eliza Rogers

Katie and Val Olsen

Raymond Porter

Janet Curran

Vicki Wallace

Stephen McAneney

Emily Woodger

Jessie Djayaprabha

Tania Thoms

Emma Lercher

Johanna Goldenberg

Chiara Masi

Cecilia Riera

Maria Brown

George Emerson

Brendan Porter

Maddie Dykes

Kay Ehrenberg

Helen Zhou

Russell Ashley

Jennifer Foster

Christine Kemp

Juanita Harrison

Ron and Vicki Degenhart

Hung Nong

Fern Linden

Dorothy Trouton

Siena Macshane

Stephanie Huynh

John Ilustre

Lina Chung

Andrew and Renae McCulloch

Justine Hissedji

Jan Johnson

Lara Davis

Maria Hicks

Janice Young

Andrea Montgomery

Lizia Lay

Jacob Trethowan

Nanette Montgomery

Cameron Jeffery

Jayden Webb

Jordan Mahayana

Siobhan Greene

Maritsa Kacopieros

Carolyn Walker

Amanda Baker

Sangita Sibakoti

Jacob Best

Emily Longhurst

Cindy-Lou Kramme

Tenille Hunter

Pam Wood

Vivian and John Chan

Lilly Lay

Nelson Lay

Mel Nguyen

Jeanine Ray

Sandra Jong

Felicidade Lay

Michelle Huynh

Duane Preston

Reichelle Simmons

Ann Wigglesworth

Jeremy Lee

Melissa Chung

Li Yang Nheu

Jeff Lim

Ferlisha Ku

Brendan Doyle

Jacinta Lim

Nelson Chung

Kate Warlond

Jose Paulo Ximenes Lay

Linda and Paulo Ku

Milena Lay

Monica and Nelson Lay

Jennifer Lai

Huxley Field

Glenda Lasslett

Jane Touzeau

Ana Ximenes & Jose Lay

Maria and Mike Hogendoorn

Lou Vale

Ming Ming Lai

Lany Yap

Sandra Lim

Towards a Better World

Susan Linge

Mundingburra Rotary Club

Townsville Central Rotary Club

Darwin Sunrise Rotary Club

Ross River Rotary Club

Greg Marlow and the team from D9550

2019 Conference Team

Mareeba Rotary Club

Darwin South Rotary Club

Townsville Sunrise Rotary Club

And to everyone who has attended
an event, bought a raffle
ticket or made a donation when you saw our
booth.

OUR SUCCESS IS YOUR SUCCESS

JUNE 2021



MISSION

Our mission is to encourage, engage and equip women and children living in high risk situations by teaching them to understand how to protect themselves from physical or emotional harm, and to develop confidence and skills that will lead to self actualisation.

VISION

Our vision is that all women and children living in high-risk situations will be encouraged, engaged and equipped with knowledge and skills to relieve poverty and stress while improving their health and well being.

VALUES

JUSTICE

The cornerstone of our work is ensuring everybody is treated equally, and with respect and dignity

INTEGRITY

We strive to be honest, transparent and accountable in all our work.

FAIRNESS

Our work will reflect fair processes and practices for everyone involved

UNDERSTANDING

Of cultural diversity, and awareness of the differences and similarities in everyone's lived experience

NON-PROFIT

100% of our project fundraising goes to supporting projects

ZEALOUS

Passion and energetic desire drives our commitment to our projects

EMPATHY

Our focus is on maintaining sensitivity to the importance of humanity in everybody we meet



CHAIRWOMAN'S REPORT

What a year it has been for Jifunze International, for our supporters and partner organisations! We have made it to our first ever Annual General Meeting, and we are stronger for it.

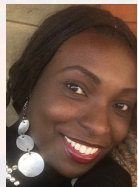
In 2020, COVID-19 brought the world to a halt. It definitely slowed things here in Melbourne and of course, in Kenya. But this lockdown gave us a chance to work together and register Jifunze International here in Australia with ASIC and the ACNC. It also allowed us to take on smaller projects in Kenya and Timor-Leste which has given the team a better understanding of the demographics that we are working with, and a better grip on managing things from a distance.

I would like to take this opportunity to acknowledge and thank our initial Directors who assisted in setting up and bringing the organisation to the level that we are at today.



L: SUSAN LINGE
R: SHARON KHAINGA

Both Susan Linge and Sharon Khainga recently stepped down as Directors and have taken positions as Members. They were there before Jifunze International was even a speck on the horizon, as knowledge providers, financial supporters and friends. I know that their connection will remain even if in a different capacity as we move forward. I thank them for their love and support.



L: SYLVIA IRANGI
R: SALLY LAY

Remaining on the Board is Sylvia Irangi and Sally Lay. Sylvia is our Executive Director of Health Service Projects. She has been the face of JI on the front lines, managing education sessions with Days For Girls (DFG), and Rays of Care (ROC). Sally Lay has been imperative in creating our policies and procedures manual. She has taken point on a number of policies, including the vulnerable persons policy on which our ethos is based. They bring to the board their own unique set of skills and I am excited to see what we can achieve as a board this year as we move forward.

It would be remiss of me to not acknowledge our Public Officer Roberta Porter, our Fundraiser Jan Johnson and our Social Media Manager Lilly Lay.

Roberta has worked to enrol JI with ASIC and the ACNC - filing these documents has been significant to becoming a registered charity. This has taken significant time and attention to detail.

Following our official recognition, Jan organised the launch of the charity at Ignatius Park College, (Townsville, Nth Queensland) which raised a massive \$5695.



Lilly ensures our donors are kept up to date and researches information that may be of interest to our social media followers. She is passionate about highlighting our purpose and has worked on our Women in Focus and African Proverbs and by doing so has created engaging content.

Of course, none of this would be possible without you, the donors. We are forever indebted to you for your generosity. I understand the responsibility that comes with receiving these donations and this is not done lightly

Now that we have acquired ACNC recognition, we intend to do our utmost to respect the standards and show our true commitment to them. The board will host a planning day in September which will allow us to plan the most productive, transparent and informed year yet.

I look forward to a year of transformative projects and governance maturity.

Asante sane to all involved.

TL : ROBERTA PORTER
TR: JAN JOHNSON
M: LILLY LAY



CEO REPORT

I won't lie and say that this year has been easy. Staying safe here in Melbourne has come with its own set of challenges. However, throughout the lockdown, I have been privileged to have access to clean water, healthy foods, masks, soap and sanitiser when required. I too, have had uninterrupted access to my mobile phone, laptop and of course WIFI. Some days this hasn't felt like enough, but then I am offered a sliver of understanding into how difficult these last 24 months have been for the community in Kenya and across the world who haven't had access to, at times, the most basic of needs.

The technology that we are afforded here in Australia has given both myself and the team the ability to Zoom, share files and lodge the information required to register Jifunze International in a legal capacity.

This was imperative as, after a number of years fundraising, it became evident that what was happening around me was bigger than I ever could have anticipated. While this year didn't go as I had planned, it gave us the time to ensure that we had ticked the boxes in ensuring governance and transparency for what was to become Jifunze International.

While the programs we originally endeavoured to fund and implement with Ujamaa Africa were put on hold, it gave us the opportunity to see where we could complete our purpose in new and innovative ways.

From providing our friends at Ujamaa Africa and Kitengela Sub County Community Hospital with PPE and educational tools, to running needs assessment days and starting work on our first community garden (Young Star Farmers / Kay Ehrenberg Garden), I have learnt more than I could have imagined, and have a newfound appreciation for those working in infection control or simply harrowing the land.

I am proud of the people we have welcomed into the Jifunze International family, who are passionate about improving the lives of people in their own community and communities that they may never see.

Whilst advocating for health and wellbeing centred education and activities in Kenya is at the forefront of Jifunze International, I applaud our Ethics and Sustainability Director Sally who approached the board about funding necessary health supplies in her home country of Timor Leste amid devastating flooding and COVID-19. She and Lilly did an outstanding job fundraising and liaising with our partners in Timor Leste.

As I have said from the day I received the first donation on our Chuffed account, it has never been I but we, and I thank you from the bottom of my heart, for whatever way you have been part of this story. I believe the team will work hard to do the best possible with future funding as we align our goals with those set out in the Sustainable Development Goals by the United Nations and Areas of Focus developed by Rotary International.

We look forward to future partnerships and collaborations, learning and growing, and we thank each and everyone of you for your ongoing support for our future endeavours.

Asante sana once again,
Victoria Porter





RECYCLING PROGRAM
10,310 ITEMS RECYCLED
\$1031.00 DONATED -

Our recycling program is a fundraising initiative spearheaded by Brendan Porter. In the state of Queensland, bottles and cans are taken to the recycling plant in exchange for cash. If you, or anyone you know lives in Townsville or Queensland, would like to be a part of this program, or to donate your bottles and cans, get in touch with us!

FUNDRAISING



\$553 RAISED
KENSINGTON
FLEMINGTON
ROTARY
ART SHOW



\$1000 - FROM DARWIN SUNRISE
FOLLOWING THEIR TRIVIA NIGHT FOR
JIFUNZE, DAYS FOR GIRLS AND SHARE THE
DIGNITY

\$2000 DIRECT DONATION FROM
TOWNSVILLE CENTRAL ROTARY CLUB



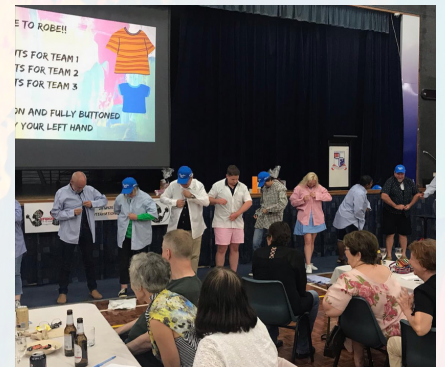
\$2205 - RAISED AT MEREWYN
WRIGHT CONFERENCE D9550
HOUSE OF FRIENDSHIP



OUR LAUNCH
EVENT AT
IGGY PARK COLLEGE
IN TOWNSVILLE RAISED

\$5695.78 +
SALE OF LEFT OVER
BEVERAGE \$182.50
= \$5868.28

THANKS TO MEMBERS
OF THE GENERAL
PUBLIC, AS WELL AS
ROSS RIVER,
MUNDINGBURRA AND
TOWNSVILLE ROTARY
CLUBS



ONLINE CAMPAIGNS

CHUFFED COVID CAMPAIGN
\$2,593



CHUFFED TIMOR-LESTE FUNDRAISER
\$4,140

FINANCES

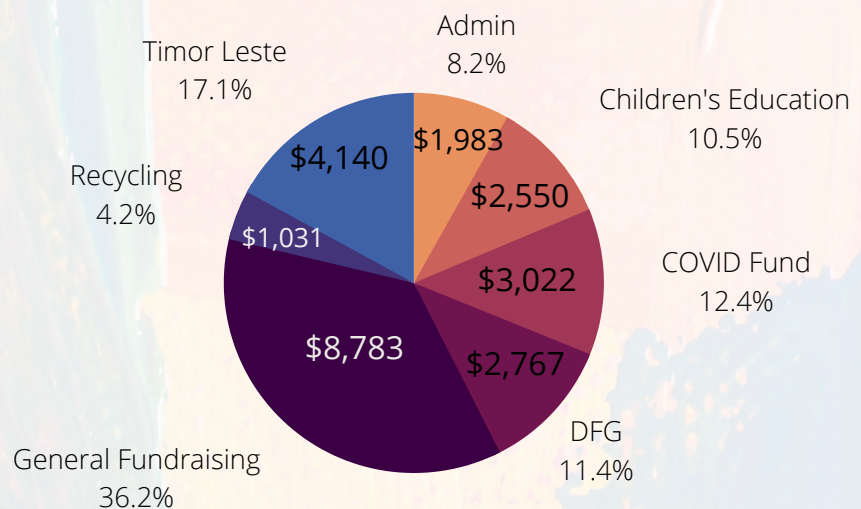
CURRENT YEAR EARNINGS - \$15,126

RETAINED EARNINGS - \$10,067

TOTAL EQUITY - \$25,193

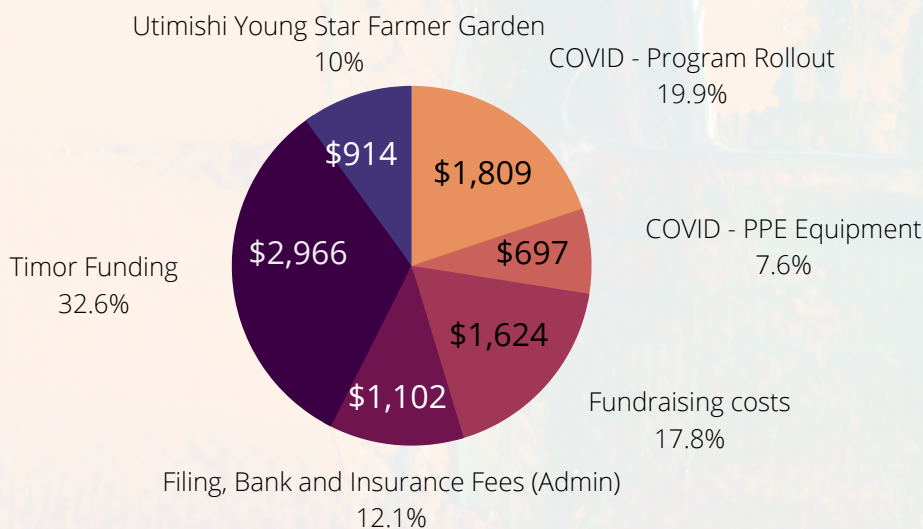
INCOMING FUNDS

**TOTAL INCOMING
\$24,276**



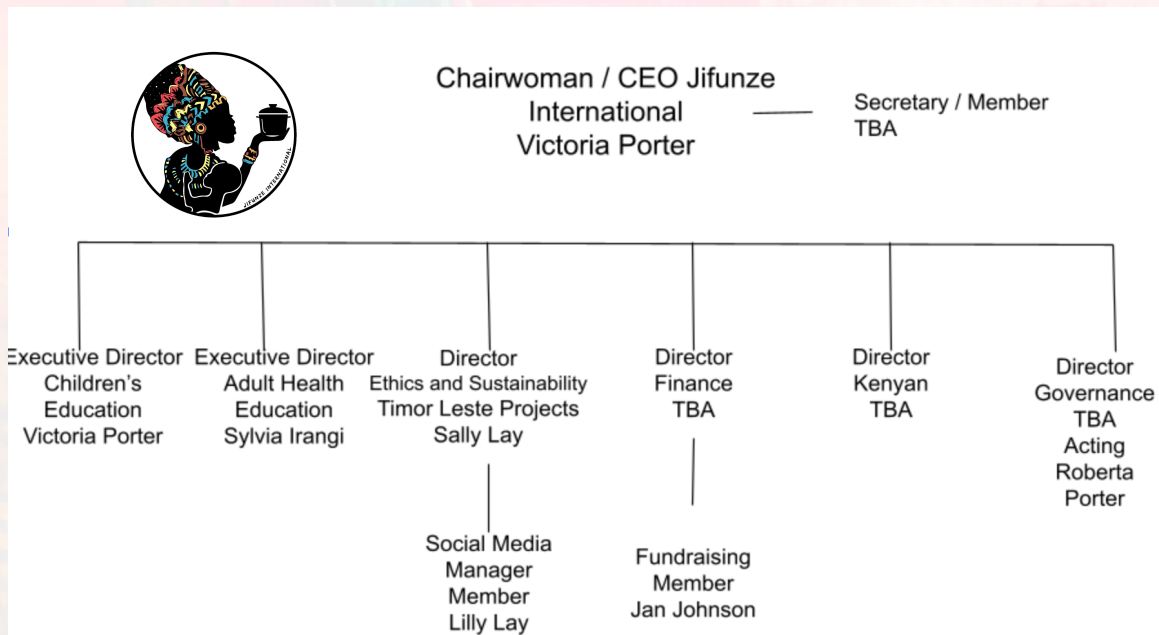
Note: Administration is covered by donations given by the Board of Directors and Members.
All public donations go direct to projects.

OUTGOING FUNDS



**TOTAL OUTGOING
\$15,126**

INCOMING STRUCTURE



GOVERNANCE

While it is true that COVID 19 has delayed and changed many of our plans, the past year of increased online meetings, webinars and electronic sharing of information has increased the opportunity to have a collaborative review of our governance model. This has resulted in JI moving forward with a successful self evaluation and planning process.

Our company structure has been reviewed and updated, with clear reporting lines established. Each Director's responsibilities have been defined and agreed to, and together, they are overseeing the work of JI both at home and overseas.

Our inaugural AGM will be held in Oct 2021 when our members and supporters will have access to the financial statements and project development plans and outcomes.

The appointment of a new Finance Director with knowledge and skills to verify and safeguard JI's financial reporting, together with regular reviews and updates of our compliance register is helping to ensure we deliver on all aspects of our charitable purpose within a strong framework of risk management, and in line with the ACNC Governance and External Standards.

As part of our review, the board has committed to improving our website access for those who wish to provide feedback. A more robust process is now in place to ensure timely responses, and our financial and operational record keeping has been further enhanced.

Throughout this reporting period, JI Directors and members have taken advantage of the ACNC free monthly webinars to increase their understanding and knowledge of contemporary practices and to ensure we meet our ongoing obligations. We recognise the importance of staying informed in order to build trust and confidence within our support network.

We look forward to 2022, when we hope to see increased diversity, and witness the skills in practice from our highly competent Directors and experience the fresh perspective from the new board members this year. We will continue with a robust evaluation process and pride ourselves in the achievements ahead.

COMMUNICATION / PUBLICITY



We launched our website and work to update it monthly. We have had visitors from the USA, China, Ireland, Kenya and the UK, amongst others. The website is an easy way to contact us and offers up-to-date information.



We have 98 people including Rotary clubs on our mailing list for regular updates. If you would like to be added to the list, please contact us.

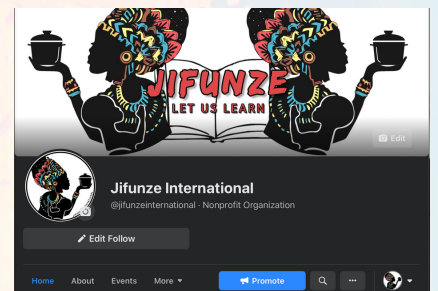
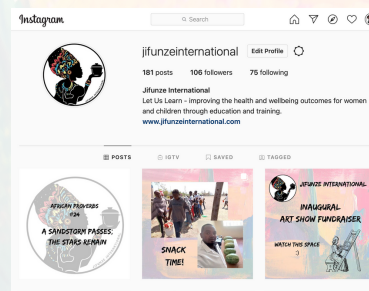


Former Townsville student's life changing Africa project

A trip to Kenya as a volunteer has led a former St Margaret Mary's College student to launch her own charity, the African Education Foundation.

The Townsville bulletin did a feature story on the charity and its founder Victoria for the launch.

We will look to continue additional marketing in both Australia and overseas as we grow the charity this year.



Our Instagram and Facebook pages have been launched. The content is created to showcase our purpose and to keep the donors and the public up to date with our programs and fundraising activities.

Instagram - 184 posts w/ 106 followers
Facebook - 358 likes and 374 followers

We will endeavour to grow this number in the coming year.

TIMOR-LESTE FLOODS - FUNDRAISER FOR TIBAR

In late March this year, heavy rains resulted in flash floods and landslides across Timor-Leste's 13 municipalities, killing 42 people, displacing over 8,000 people, and causing damage to more than 25,000 households. Most of the damage occurred in the capital city of Dili, and the surrounding low-lying areas. Roads and bridges out of Dili were damaged, preventing first responders and aid agencies from getting assistance to the many affected municipalities.

Whilst Jifunze International's work is focused primarily on women and children's health in Kenya, a few members of our Board have a strong connection to Timor-Leste. Sally approached the Board to set-up a fundraiser for the emergency relief efforts happening in the aftermath of the floods, particularly to the small communities outside of Dili, such as Tibar in Liquica municipality.

Jifunze International partnered with Fundacao Feto iha Kbiit Servisu Hamutuk (FFKSH) – meaning 'strong women working together' in Tetum. FFKSH were already working on the ground in Tibar, and had partnered with the local church to shelter and feed the 201 people from 33 households that were affected by the floods.



We worked together with Gizela (Founder of FFKSH) to conduct a needs assessment of what they would need for a month until other aid agencies were able to arrive from Dili, including basic health supplies such as shampoo, soap, toothbrushes and toothpaste, sanitary pads, nappies, baby oil and formula.

Our online fundraiser on Chuffed raised AUD\$4140 from the amazing generosity of our supporters!

There were some challenges and delays in the project – an outbreak of the coronavirus resulted in a nationwide lockdown in Timor-Leste, and many supermarkets were running low on supplies. However, with the help of volunteers from FFKSH and the Jesuit Brotherhood in Tibar, we were able to organise the purchase and distribution of the supplies to the families.

Times like this show just what community means - the solidarity of the Timorese expatriate community in Australia with their homeland; the resilience of people in Timor-Leste in getting through the floods and rebuilding their lives; and the collaborative effort between transnational organisations and people, in-person and online, to help our fellow humans.

Our deepest gratitude to all our supporters - thank you.

COVID 19 RESPONSE

426 REUSABLE MASKS
1550 DISPOSABLE MASKS

4 THERMOGUNS

50 FACE SHIELDS

162 COVID-19
EDUCATIONAL POSTERS



300 LITRES OF SOAP

These items were distributed to community health volunteers and Ujamaa staff for distribution to staff and community.

Reusable face-masks were made by Love Artisan - (supporting their furniture makers whose employment was stalled due to COVID-19) Days for Girls Enterprises and women in the Ujamaa micro finance program.

DIFFERENTLY ABLED EDUCATION DAY



Jifunze International partnered with Rays of Care and offered COVID education for the differently abled community in Kitengela. Sylvia, our Executive Director, took the training she had with Amref and delivered it to 60 members of the differently abled community /carers. In conjunction with her verbal message, we created visual handouts and had them distributed in A4 and A3 for the visually impaired. Everyone who attended received reusable masks and veggie bags.

MWENZI NA DADA PROGRAM



Mwenzi Na Dada - Meaning: just like with each full moon, so too do our sisters get their periods.



Working in partnership with Alice from Days for Girls in Nakuru, Roteract Clubs of Kitengela and TUK, we mobilised 71 girls in Kibera and Bissil, offering education on puberty and mensuration in a short 3 hour session. COVID safety was taken into consideration, with temperature checks, sanitiser and masks offered before the girls moved to the classroom. The girls received disposable or reusable kits depending on the assessments conducted before hand, as well as educational booklets to keep and share.

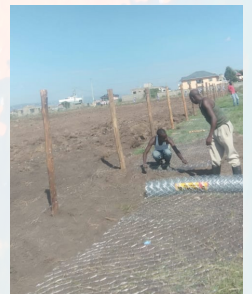
WOMEN'S NEEDS ASSESSMENT



In 2019, we ran a three day session with the teachers from Ujamaa. This year, we were able to gather together some of the original participants and the Community Health Volunteers from Kitengela Sub County Community Hospital. The sessions were led by Artmosphere and Alice and her team from Days for Girls. We provided COVID safety education, snacks and lunch, as well as take home veggie packs. This needs assessment day allowed us to have a better understanding of women's health needs in the community, concerns around domestic violence, the success stories of some of the women and their concerns around children's abuse in the community, as well as food insecurity.

UTIMISHI PRIMARY SCHOOL - COMMUNITY GARDEN

From our needs assessment with the women, we established that throughout the COVID -19 crisis, food shortages became a real issue for many. We offered food packs but were looking for a more sustainable long-term program that could work to integrate our ethos of ensuring health and wellbeing. Utimishi School Principal Loise partnered with us, offering a piece of land for a community garden. So far the land has been fenced and plowed. We look forward to planting seedlings which will offer healthy meals for students, as well as practical health, nutrition and agriculture learning opportunities for the students.



UJAMAA PROGRAMS

GK PRISION



Due to COVID-19 and shut downs of schools in Kenya, our programming at GK Prision Primary was put on hold. We are in discussions to have a 3 part refresher class offered to the students in the new financial year. Following this, the new cohort of students for the SASA and Champion programs will be established and implemented.

ASANTE SANA TO OUR PROJECT PARTNERS

UJAMAA AFRICA

DAYS FOR GIRLS

RAYS OF CARE

ROTERACT CLUB OF KITENGELA

KITENGELA SUB COUNTY COMMUNITY HOSPITAL

READERS NEST ENTERPRISES

FOUNDATION FKSH (FFKSH)

UTUMISHI PRIMARY SCHOOL

KAIJADO HEALTH DEPARTMENT

ROTARY CLUBS D9550



CONTACT US

VICTORIA PORTER

WHATSAPP: 0402 575 041

E: INFO@JIFUNZEINTERNATIONAL.COM

W: WWW.JIFUNZEINTERNATIONAL.COM

KATIE OLSEN - SECRETARY -

E: KATIE@JIFUNZEINTERNATIONAL.COM